

Agenda

- Introduction
- Survey Parameters and Results
- Mission Statement
- Post-Modernisim
- First Impressions
- Canopy Design
- Exterior Palette
- Financing Overview
- Q & A

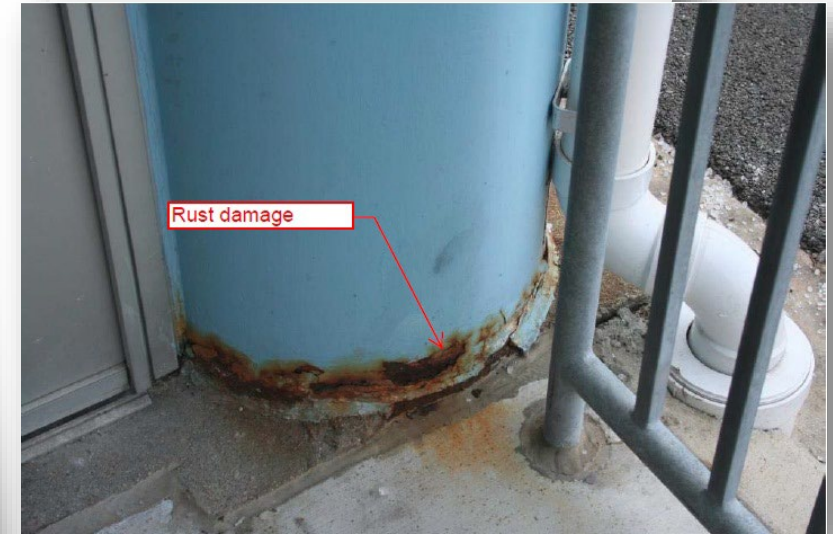
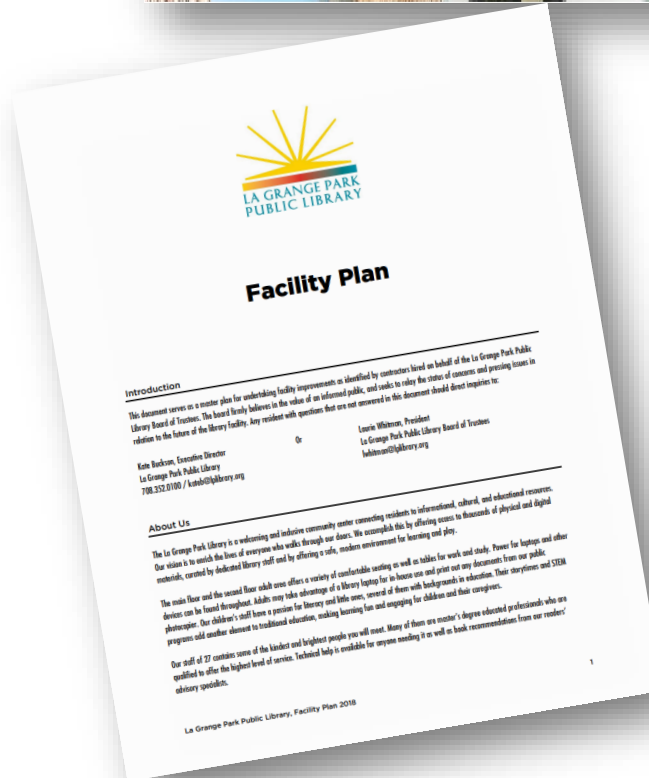


History of the Project

- 2015: Water infiltration investigation
- 2016: Overall facility needs assessment completed
- 2017 & 2018: A master facility plan is created and introduced to the community
- 2020: Boldt is hired as the construction manager for the project
- 2021: 845 Design is selected as lead architect



A New Model For Public Libraries:
The Pew Research data led us to propose a new planning model for public libraries in which housing and supporting the traditional library collection is no longer the primary focus of library design but rather one of several equally important components. This approach places equal importance on what goes on within the library as with what is contained within the library.
Our new library model is a vehicle for providing services that are described by 3 verbs;
"Consume/Connect/Create."



Information Gathering Parameters

Surveys

- Patrons (205 responses)
- Staff (17 responses)
- Community Partners (7 responses)

Interviews

- Board of Directors
- Facilities Team
- Directors
- Staff from each department
- Patrons (Seniors, Adult, Young Adult, Children's)
- Interfaith
- Friends of the Library



Survey Findings

Topic	Top Responses
Average Age of Respondent	56.4 yrs old
Frequency of visits	50% visit weekly 42% visit monthly
Reason for Library Visit	90% come to browse stacks 55% come for programming
What they miss due to pandemic?	-Browsing - Children's Programming (in-person)
Building changes that could make future visits better	more children's space, upgraded restrooms, coffee shop, cozy reading nooks, outdoor reading space, quiet study space and more meeting rooms
Self-services that are used	75% of patrons use the SWAN online and 70% use the self-checkouts
Self-services that would be used if offered	Over 50% of patrons would use a drive-thru pick up and curbside pick-up if offered
Feelings on look of building exterior	35% open to a slightly different look 25% do not have an opinion
Most loved interior feature of building	Openness, Natural Light, Second Floor, Views to Park, Barrel Vault Ceiling, High ceilings on Second Floor,
Do you use libraries in other towns? If so, why?	58% of patrons said they use other libraries (LaGrange, Brookfield, Westchester, Western Springs, Oakbrook) <ul style="list-style-type: none"> - More variety of materials - Change of pace - More small meeting rooms - Programming - Playdates and Homeschooling
Do pre-pandemic hours meet your needs?	Over 88% responded yes
Do you engage in content creation?	76% No or unsure 24% Yes (Recording Studio, Painting, Fine Art, Crochet, Jewelry Making, Podcasts, Gardening, Quilting, Knitting, Photography, Website Creation, Jigsaw puzzles, Cooking)

Interview Findings

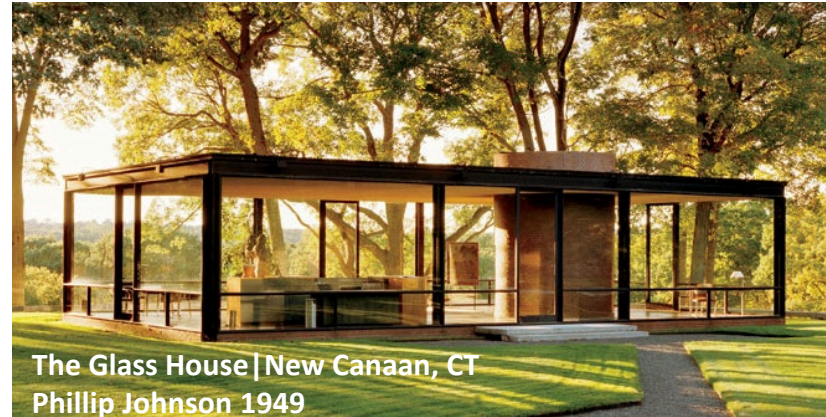
Directors	Board of Directors	Staff	Patrons	Friends	Community Partners
More Meeting Space	More Meeting Space	More Meeting Rooms	Improved Circulation/Entry Area	Need a spot to sort donations	Continue to build the businesses in town by marketing them
Resolve Noise Issues	Improve Flow and User Experience	Resolve Noise Issues	Keep open feeling	Need closets to store donations	Support Local
Improve Circulation/Entry Area	Enhance Independent Services	Move to Marketplace Shelving	Library should be a gathering place	Considering buying tables for sale days- would need storage for them at Library	Keep brochures and inform staff of community resources (Interfaith, BEDS)
Improve book drop and holds areas	Virtual Programming	Keep Open Feeling	Coffee Shop	Considering sale events vs. permanent display area	Easier entry for seniors
Add 24 hour lockers	Resolve Noise Issues	Resolve Temperature Issues	Maker Space	Library is a gathering place	Serve as a gathering place
Keep open feeling	Improve book drop	More Space for Children's Department	Resolve Noise Issues	Resolve the Noise Issues	Programming on work from home topics
Move to Marketplace Shelving	Improve outdoor space	Add 1 st Floor Restroom	Natural light is great	Keep open feeling	
More off-desk workspace	Add more printing capability	Coffee Shop	Self Checkout appeal is generational (older generations don't like it, younger generations do)		
Add 1st Floor Restroom	Library of things is underutilized- need better display	Enhance Independent Services (keep home delivery and virtual programming)	Shopping in the Bookshop		
No need for Coffee Shop, keep vending area	Keep open feeling	Improve sightlines	Tech Classes for Seniors		
Add maker space	Add work from home amenities	Improve wayfinding	Improve Outdoor space		
Explore another building entry	Improve lighting	Add work from home amenities	Craft Clubs		
	Improve sightlines	Off-desk space	Cozy (and clean)furniture in a quiet nook		
	Don't play it safe		Ability to open the windows		
	Children's desk is too large				
	Add 24 hour lockers				

Library Mission Statement



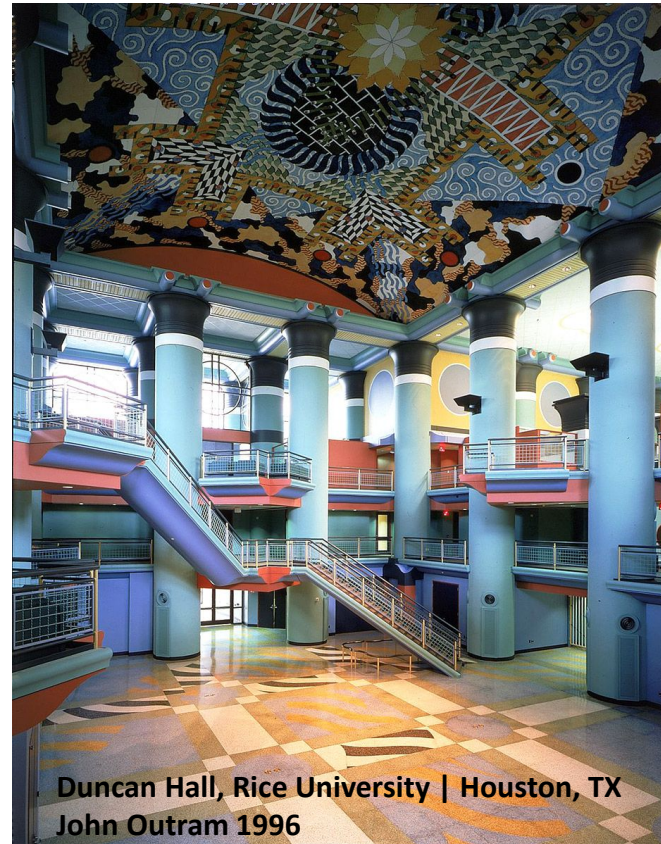
Architectural History- Modernism

- In response to a world defined by industry, production, urbanization
- Stunning, pure expression of form, structure, space and materials.
- Highly restrictive style
- Success was derived from exceptionalism
- Often dependent upon a wealthy client, secluded site, etc.



Architectural History- Post- Modernism

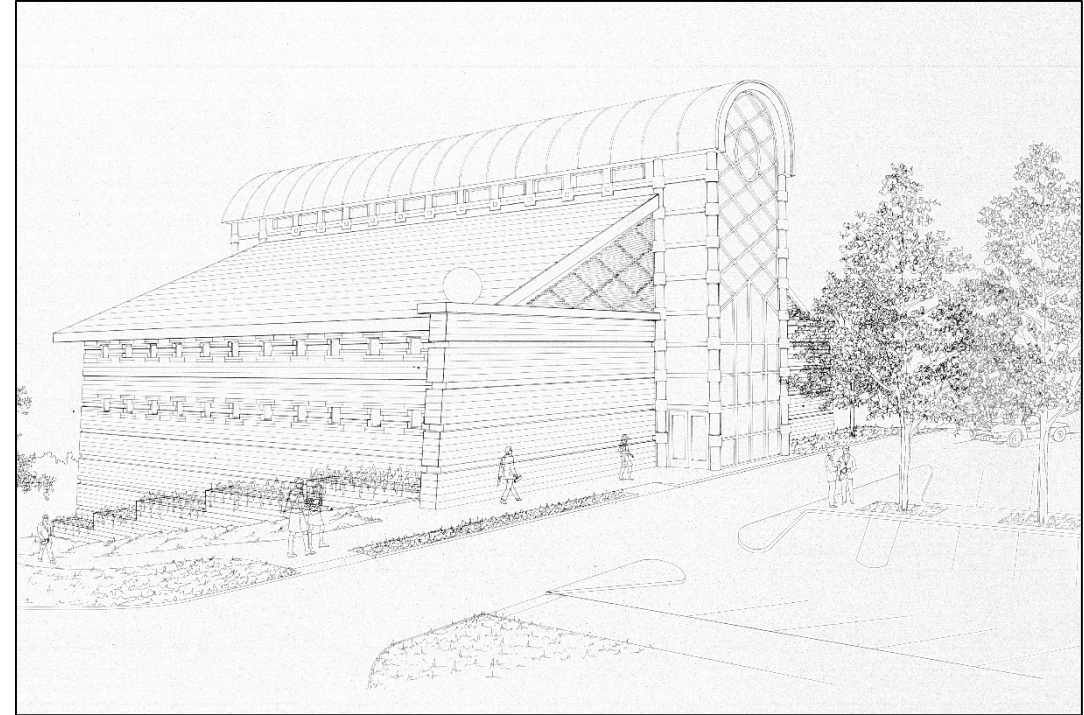
- Response to Modernism
- Post-Modernism was post-war, new cultural and political possibilities, pop art, pop music, tv, environmental movement, civil rights, women's rights
- New style of architecture that would help to make sense of this new world
- reveled in its complexities and rather than trying to solve them.
- Post modernism aesthetics were the belief of meaning over muteness



Post- Modernism and LaGrange Park Public Library

- Postmodernism is about freedom of expression, of meaning, and identity.
- Reveling in disorder, contingency and complexity, breaking down hierarchies, celebrating the overlooked.
- Written off as silly, tasteless, ugly
- Legacy is pervasive: issues of place, context and architectural meaning have roots in Post Modernism

- All are welcome
- We are an open book



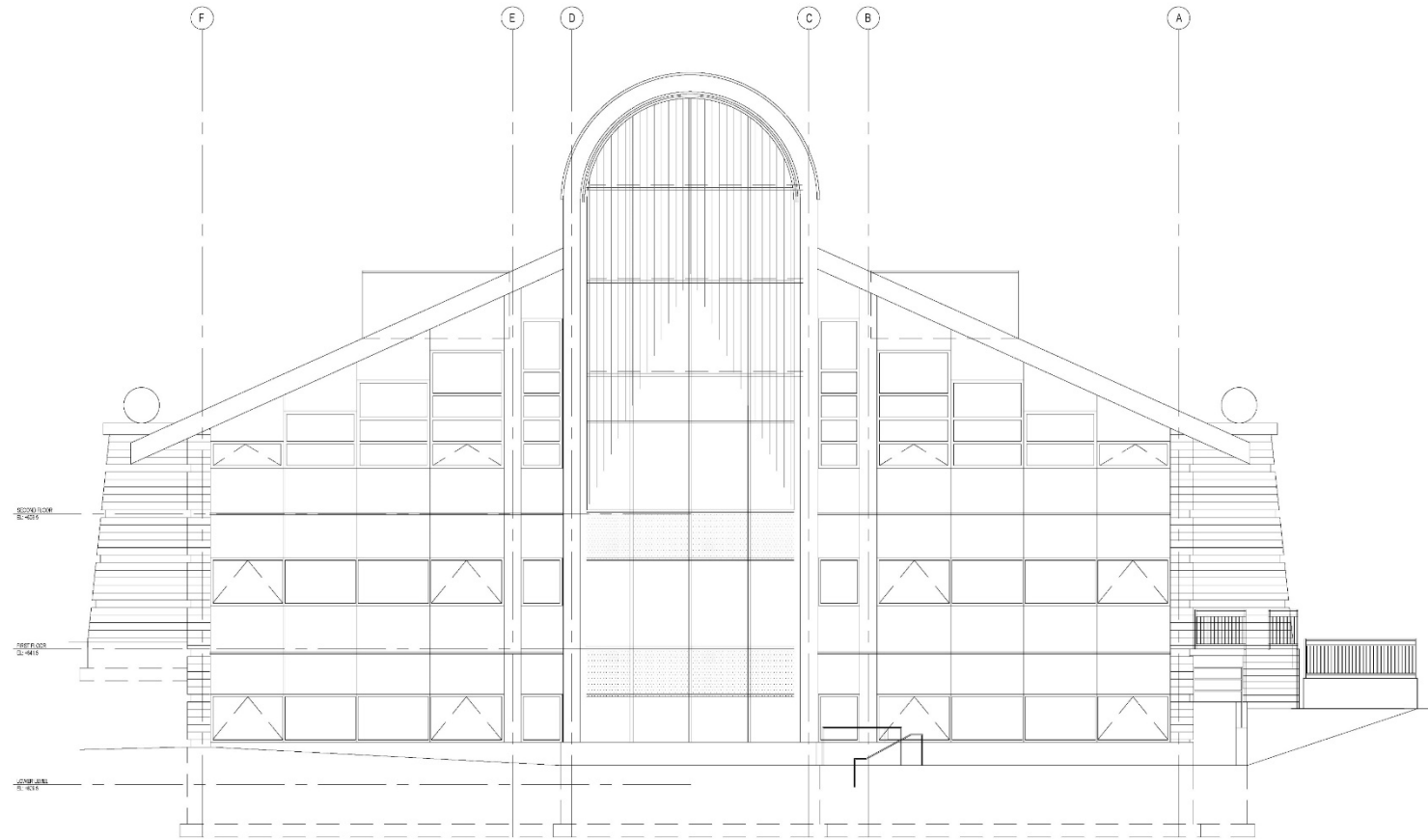
EIFS Replacement Research

	Drainable EIFS System	Metal Panel (Aluminum)
Cost	\$30-35/sf (installed)	\$60-65/sf (installed)
Parameters	Complete System is warrantied (including insulation and air barrier)	Metal Panel, insulation, and air barrier are all separate warranties
Basis of Design	StoTherm ci Lotusan	Alucobond



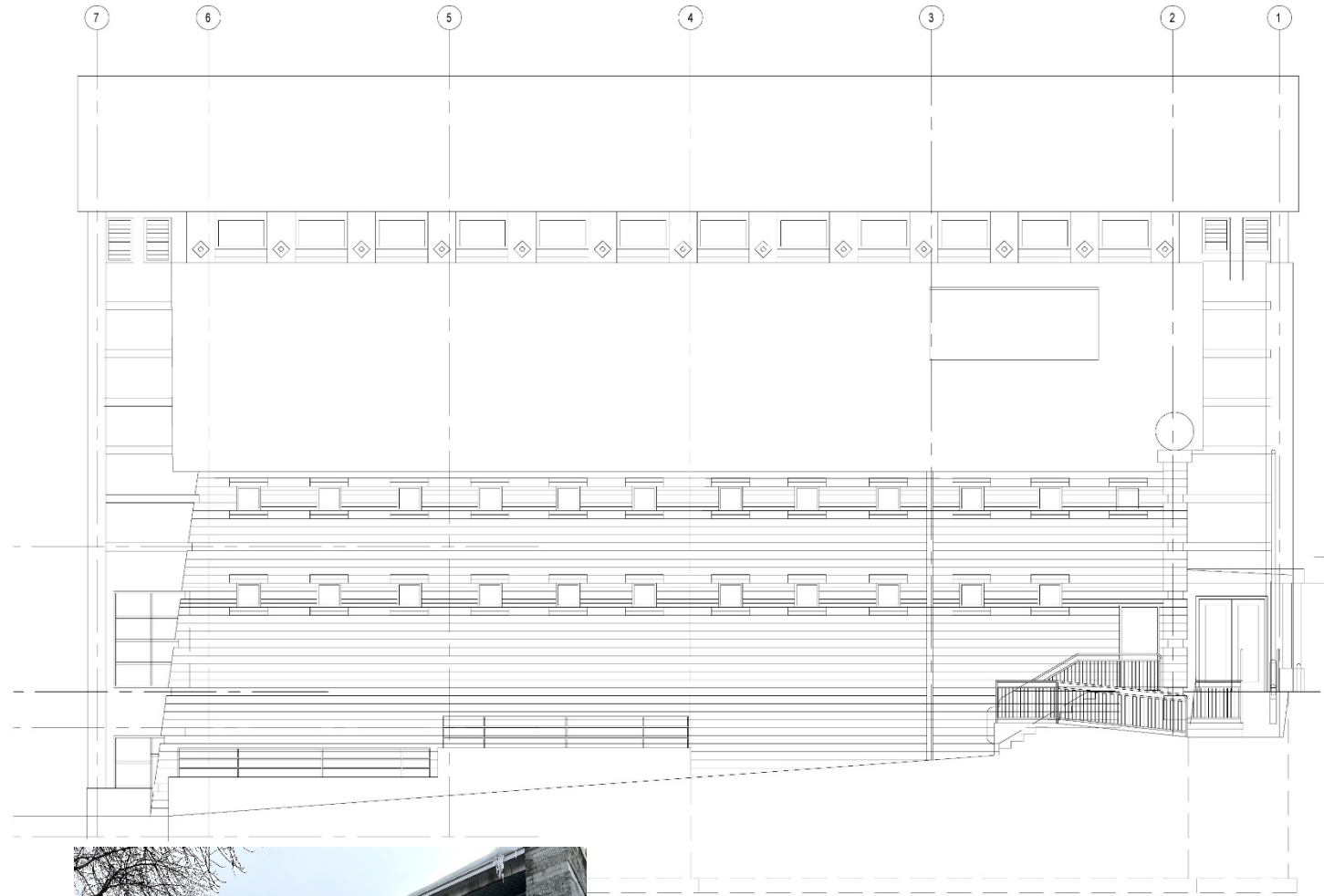
East Elevation

- Remove existing EIFS wall system and replace with a modern, drainable EIFS system
- New glass curtain wall system at barrel vault
- New ribbon windows (removing blue framed windows)
- New entry door at Patio
- New insulation and column covers at the blue columns
- New color scheme that is easy to maintain
- New railing at existing patio
- Consider expanded patio in front of barrel vault



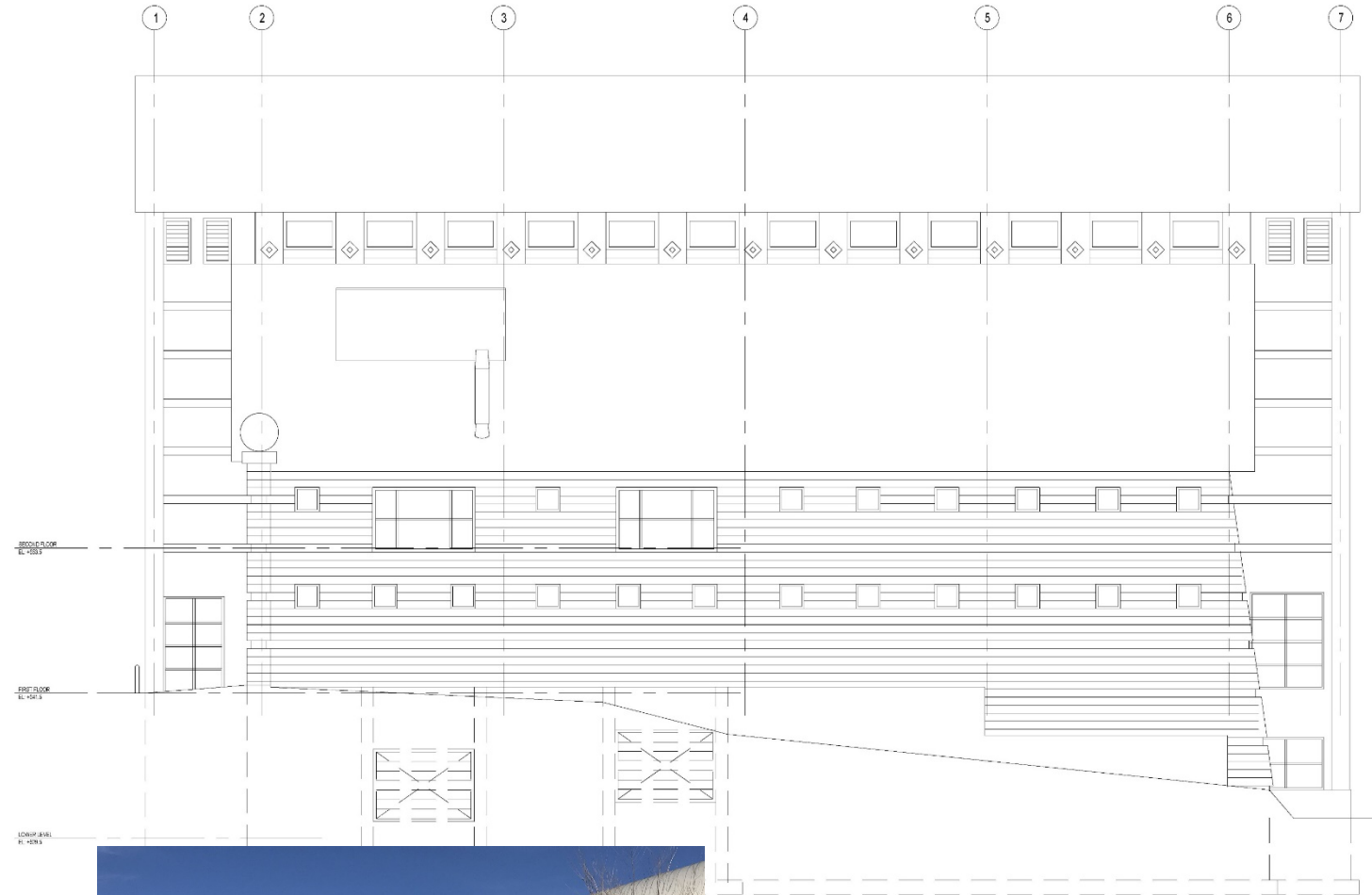
North Elevation

- Remove existing EIFS wall system and replace with a modern, drainable EIFS system
- New clerestory windows (removing blue framed windows)
- New color scheme that is easy to maintain
- New ramp and railing wall
- Educational signage at bio-swale
- *Clean and Seal existing Masonry (add to Maintenance Plan)*



South Elevation

- Remove existing EIFS wall system and replace with a modern, drainable EIFS system
- New clerestory windows (removing blue framed windows)
- *Clean and Seal existing Masonry (add to Maintenance Plan)*

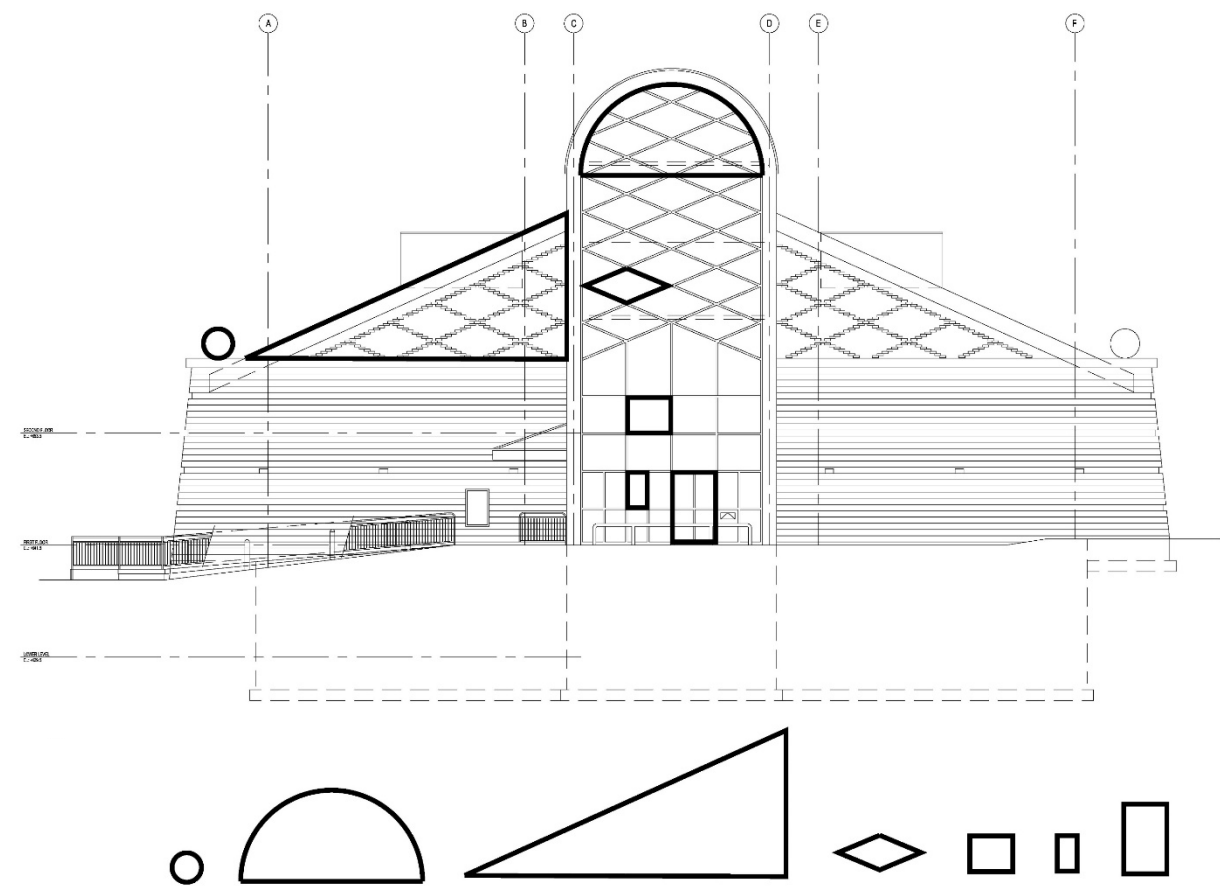


West Elevation

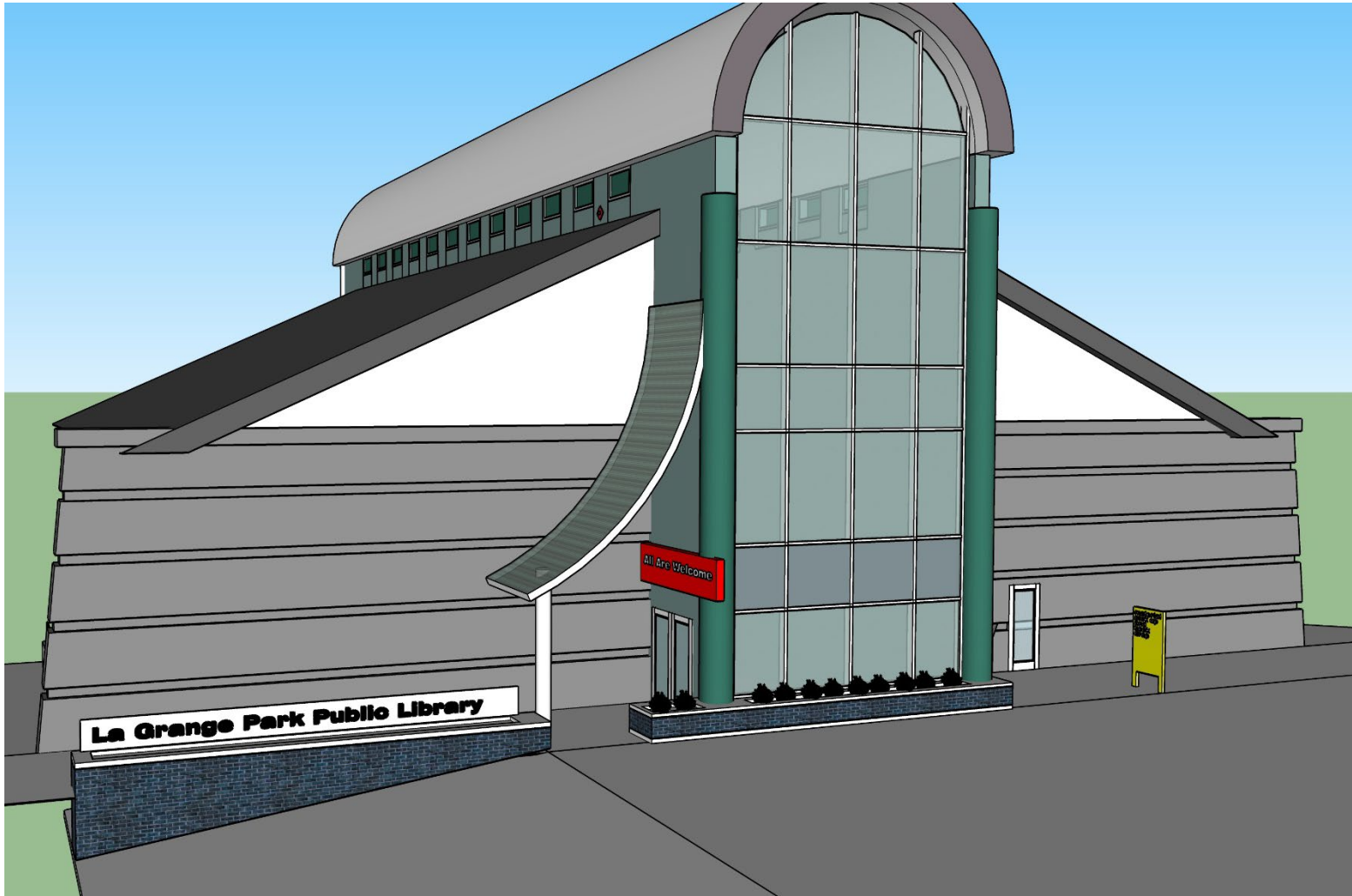
- New glass curtain wall system at barrel vault
- New entry doors
- New canopy with hidden gutter and drainage
- New insulation and column covers at the blue columns
- New book drop location
- New masonry planter/pedestal at the barrel vault glazing that carries into the new ramp
- Removal of the failing concrete ramp and railing
- Re-locate flag pole to center parking island
- New exterior lighting
- Thoughtful, clean, approach to front doors
- New color scheme that is easy to maintain



West Elevation Geometry and an Open Book



West Elevation- Canopy Design draft

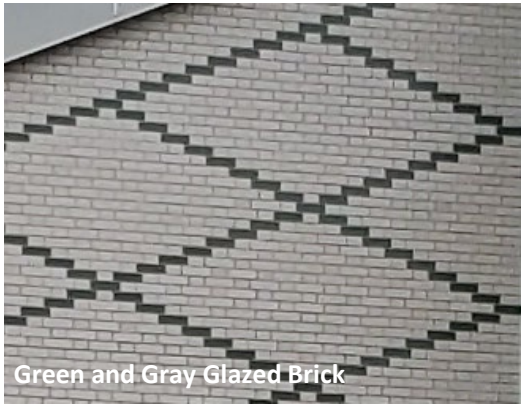


Exterior Color Palette

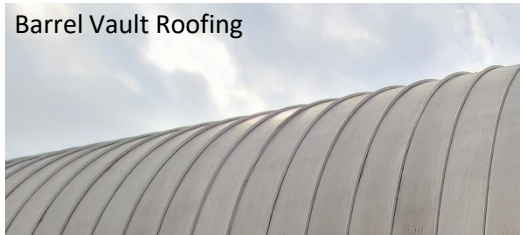
Constants



Glazed green and yellow bricks and split face gray block



Green and Gray Glazed Brick



Barrel Vault Roofing



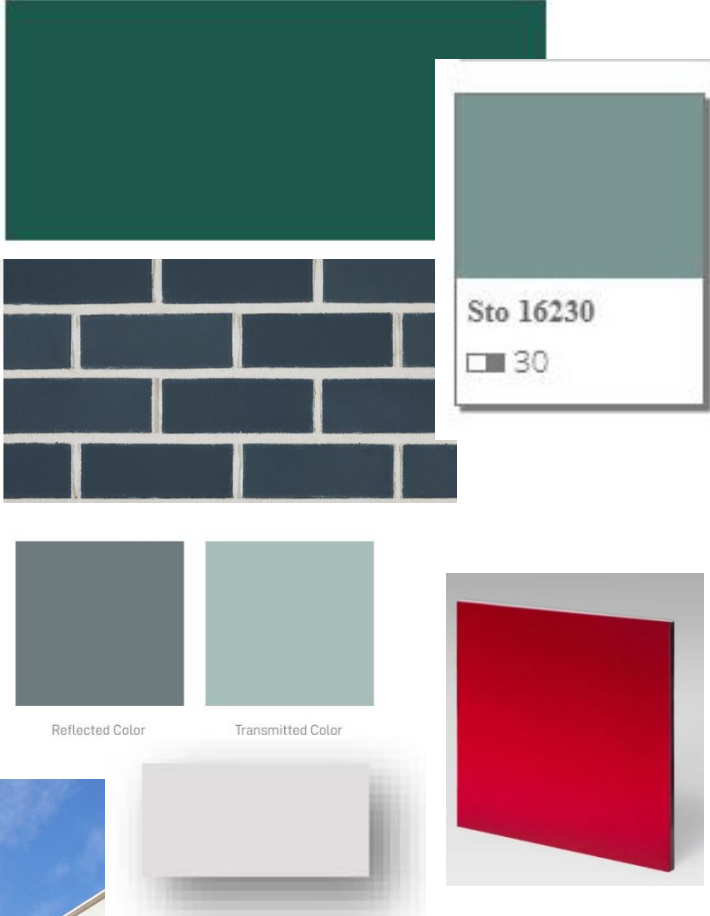
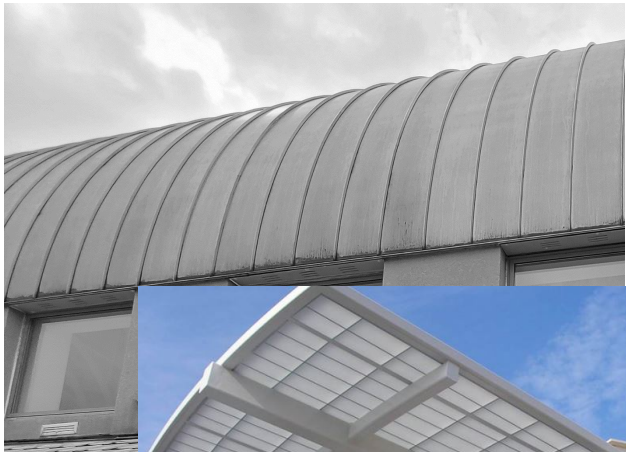
Low Sloped Roofing

Opportunity for Change



G

Proposed Exterior Color Palette



Financing the Project

- There will *not* be a referendum
- The library has over \$1.5 million saved in our capital projects fund
- Bonds will be issued this September to take advantage of historically low interest rates
- Bonds will be paid off over a period of years



Questions?